

# Why consider repacking?

## Cost-Effective

Repacking is often significantly cheaper than buying a new battery.



## Improved Performance

- **Larger Capacity:** We can often increase your battery's capacity, giving you extended range.
- **Latest Cell Technology:** New cells offer better performance than those in your original battery.



## Environmentally Friendly

- Reduces e-waste by reusing the existing battery case
- Old cells are properly recycled and cell that still have some life are recycled into new products that are less demanding than ebikes.



## Customisation

Repacking allows for customisation of your battery's capacity and performance.



# Repacking vs Buying New: What You Need to Know

- **Technology:** A repacked battery uses the latest cell technology. New batteries might have been sitting on a shelf for years.
- **Capacity:** Repacking often allows for increased capacity, while new batteries are limited to their original specifications
- **Cost:** Repacking is typically more cost-effective than buying new.
- **Solution:** Often on older bikes, replacement new battery are not available so repacking might be the only option.



# Common Concerns



## Q: How long will a repacked battery last?

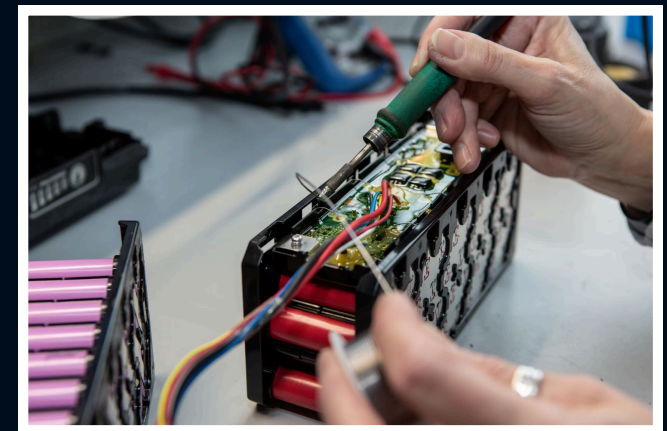
A: A properly repacked batter can last as long as a new one, or potentially longer as cell technology has improved, often 3-5 years with proper care. How a battery is looked after plays a huge role in the lifespan of the

## Q: How long will a repacked battery last?

A: A properly repacked batter can last as long as a new one, or potentially longer as cell technology has improved, often 3-5 years with proper care. How a battery is looked after plays a huge role in the lifespan of the

## Q: Will my repacked battery have a warranty?

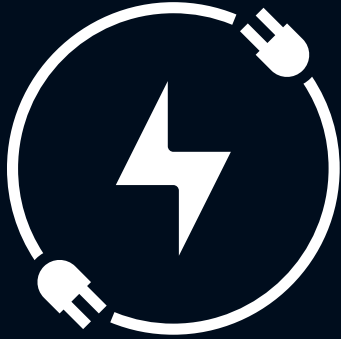
A: Yes, if your battery is repacked by us at Repack Pro, we offer a 2 year warranty on full repacks.



# Understanding E-Bike Battery Repacking

## What is battery repacking?

Battery repacking is the process of replacing old, worn-out cells inside your e-bike battery case with new brand, high-performance cells. This rejuvenates your battery, extending its life and often improving its performance.



## How Does Battery Repacking Work?

1. The battery pack is carefully opened
2. Old cells are removed and recycled  
New, high-quality cells are installed
3. The battery management system (BMS) inside the battery is replaced to match the new battery, and to improve battery lifespan
4. The battery is reassembled and thoroughly tested

# The Repacking Process: What to Expect



### 1. Assessment:

Your battery is tested to determine its current condition.

### 2. Quotation:

Based on the assessment, you receive a quote for the repacking service.

### 3. Repacking:

If you approve, the battery is repacked with new cells.

### 4. Testing:

The repacked battery undergoes rigorous testing to ensure performance and safety.

### 5. Return:

Your rejuvenated battery is returned to you, ready for many more miles of adventure.

416 Church Street • Palmerston North •  
06 353 3373 • [workshop@repackpro.co.nz](mailto:workshop@repackpro.co.nz)



416 Church Street • Palmerston North •  
06 353 3373 • [workshop@repackpro.co.nz](mailto:workshop@repackpro.co.nz)



## Professional Battery Repacking Service

Revive  
Refurbish  
Recycle



Panasonic



SAMSUNG